



Company Profile

Building & Industry
Energy & Utilities
Environment & Planning
Project Management

Finance
Human Resource



Almenna Consulting Engineers

Almenna Consulting Engineers is a modern, broad-spectrum, knowledge-based enterprise that stresses close attention to clients' requirements, quality service and efficiency. The company has decades of experience in consulting and project management and employs experienced professionals in every relevant field. Almenna Consulting makes a concerted effort to incorporate the latest technical, methodological, and ideological innovations.

Almenna Consulting is an environmentally-aware enterprise that prides itself on supplying engineering expertise that not only meets today's requirements but also serves the needs of the future.

History and present situation:

Almenna Consulting Engineers Ltd. (Almenna) was established 1971 as the successor of the engineering contractor and consulting firm Almenna Contractors Ltd., which was established 1941 and was during its 30 years lifespan one of the largest general contractor in Iceland. Almenna Contractors played a major role in the infrastructure development and industrialization that began in the post-war years in Iceland.

All the founder members of Almenna worked at Almenna Contractors, so the company draws on decades of experience. Almenna has as well constantly assimilated new technologies and built up increased knowledge on the base that was in house at its establishment.

Almenna is a share holding company presently owned by share holders, all employed by the company, as is the objective of the company.

Almenna's headquarters are located in its own housing at Fellsmúli 26, Reykjavík.

Almenna is a member of the Association of Consulting Engineers in Iceland (FRV), that is a member of the International Federation of Consulting Engineers (FIDIC).

Values

Knowledge

We make every effort promote knowledge-sharing among our personnel and with our customers. We continuously strengthen and augment our range of expertise, and we also generate new knowledge that benefits personnel, the company and our clients.

Ambition

We are determined to provide the best possible service for every assignment we undertake. As individuals, and as a company, we are determined to achieve both professional and financial success. We continuously seek new opportunities, set ourselves objectives and meet these goals. Our personnel are given responsibility and opportunities to exercise and demonstrate their skills.

Reliability

We are determined to live up to our clients' expectations. Meeting commitments is an essential part of our work. Our clients entrust us with important projects, and we meet deadlines and respect cost limits.

Organization

Almenna is divided into 4 expertise divisions:

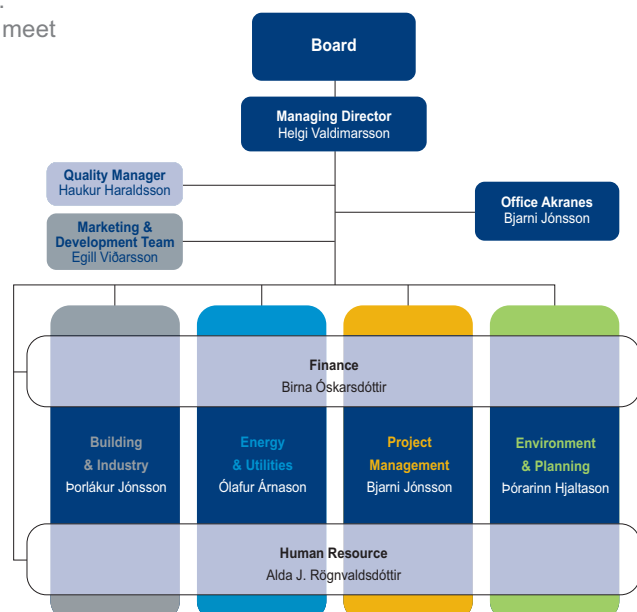
- Building & Industry**
- Energy & Utilities**
- Project Management**
- Environment & Planning.**

There are in addition two supporting divisions:

Finance and Human Resource division

as well as a marketing and development team that supervises company development and works continuously to find new solutions that will benefit our clients.

Priority is always given to environmental concerns.



Human Resources

Almenna Consulting takes pride in being a workplace that attracts, encourages and keeps capable and ambitious personnel. Company staff currently number around 65, including 55 technicians educated at universities in Iceland, the Nordic countries, the United Kingdom, Germany, and the United States, which ensures a wide range of international technical expertise and experience.

Almenna Consulting Engineers' success depends on the company employing experienced and capable staff.

Branch Offices and subsidiary firms

In addition to Almenna's headquarters in Reykjavík, one office is situated at Akranes.

Almenna is also a half part owner of Innivist Ltd., a company, which specializes in the investigation of indoor environments, i.e. quality of air, temperature, humidity, sound and other parameters that affect peoples indoor comfort.

SAGA TRAFFIC is a company owned by Almenna Consulting Engineers and Sagasystem Ltd. SAGATRAFFIC specializes in ITS, Intelligent Transportation Systems. It provides Information and communications technology for transport infrastructure and vehicles.

Project and services

Almenna has during its lifetime been involved in many of the largest projects undertaken in Iceland by the state and various communities and private companies.

Those projects include:

- Government Buildings
- Industrial Plants
- Hydroelectric Power Plants
- Transportation's construction
 - Roads and Bridges
 - Airports and Airfields
 - Harbors
- Sewage Treatment Plants and Water Supply Systems
- Project Management and valuation, Appraisal
- Maintenance of Structures
- Geological Studies and Environmental Impact Assessments

Foreign engineering JV partners are from various places in the world, e.g. from Scandinavia, Britain, Continental Europe, United States and Canada. Almenna has valuable experience in collaborating with foreign companies and providing services in accordance with international standards and construction practices.

Almenna has from its establishment provided general and specialized consulting services in the fields of civil and mechanical engineering, municipal and environmental engineering as well as natural science. The services include a general technical assistance in accordance to the client's wishes, from the very first planning and pre-feasibility studies to the final engineering design, construction and operation.

The services of Almenna may be classified into the following main parts:

- Pre-feasibility Studies and Field Investigations
- Preliminary project planning and feasibility studies
- Surveying and Mapping
- Planning Documents
- Design and Preparation of Tender Documents
- Geological Studies and Environmental Impact Assessments
- Sustainable design and accredited certification
- Design and Construction Project Management
- Environment Health and Safety Management
- Cost estimates and Appraisals
- Construction Supervision and Inspection
- Maintenance and Condition valuation
- Facility Management

Almenna has during its lifetime been involved in many projects as listed in the company's website www.almenna.is.

Quality Management System



Almenna's Quality Management System operates according to the standards ISO 9001:2000 and ISO 14001:2004.

A Quality Manager is employed at Almenna, in addition to a three member Quality Board, that is responsible for the construction and maintenance of the company's quality management system. The Quality Manager also participates in the preparation and follow-up of the quality management in individual projects.

Quality management within the company is based on its organizational structure, division of responsibilities and duties as well as the work procedures employed.